

WEEKLY NEWS

First Presbyterian Church - Willoughby Second Sunday after Epiphany – January 16, 2022

The Rev. S. Shane Nanney – Pastor
Lectors – 9:00 – Harriet Speece; 11:00 – Sandy DeMeza

SUNDAY – January 16 – Worship Services at 9 and 11 am
The Scripture readings for Second Sunday after Epiphany are:
1 Corinthians 12:1-11 and John 2:1-11
Sermon: “The Best Wine”

Welcome!

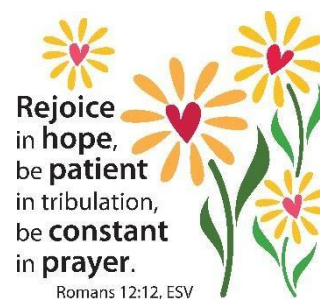
Welcome to worship, fellowship, and Christian education at First Presbyterian Church. We are honored to be with you in the Lord’s presence.

To all Members and Friends of First Presbyterian Church:

Please remember that everyone is required to wear a mask inside the church building.
If you do not have one, masks will be available at the door.
Thank you for your cooperation, and your consideration of all.

PRAYER CONCERNS

We pray for all of our members and friends in need of prayer for concerns of any kind. Names are not included here for privacy on the internet. We pray for all those impacted by the tornado breakout in several states, and all those affected by the resurgence of the COVID-19 virus.



PLEASE SEND YOUR PRAYER REQUESTS AND UPDATES TO THE CHURCH OFFICE!

PRAYER CHAIN – If you have **prayer requests** – of concern or joy – and would like to share them with your church family, **please send them to the church office at office@fpcwilloughby.org** and indicate whether the request is for sending out on the prayer chain, listing in the bulletin, or both.

Remember, sending cards to our homebound would perhaps brighten their days. Please consider dropping a note in the mail or giving them a call. Printed directories are available in the entry hall of the church. If you need addresses or phone numbers, please contact Gail in the church office.



WHAT'S HAPPENING IN CHURCH THIS WEEK?

Sunday, Jan 16 – 9 and 11 am – Worship Services

Sunday, Jan 16 – 10 am – Sunday School classes

Sunday, Jan 16 – 7:00 pm – Adult Sunday School via Zoom

Monday, Jan 17 – 12 pm – One Step at a Time AA Meeting – WPG

Monday, Jan 17 – 4 pm – Free-Food Distribution

Monday, Jan 17 – 7:30 pm – Willoughby Monday AA Meeting – WPG

Tuesday, Jan 18 – 2:00 pm – Mission Committee Meeting

Tuesday, Jan 18 – 7 pm – Bible Study – Topic: Parables

Wednesday, Jan 19– 1 pm – Lake County Women AA Meeting – WPG

Wednesday, Jan 19 – 7:30 pm – Wickliffe Group AA Meeting – WPG

Thursday, Jan 20 – 7:30 pm – Stepping Up Al-Anon Meeting – via Zoom

Saturday, Jan 22 – 12-3 pm – Shankland Saturday AA Meeting

Sunday, Jan 23 – 9 and 11 am – Worship Services

Sunday, Jan 23 – 10 am - Sunday School classes

Sunday, Jan 23– 7:00 pm – Adult Sunday School via Zoom

Signs of our Faithfulness

January 9, 2022

Attendance: 59 in person; 76 online

Thank you so much for your regular giving.

Your dedication is so very much appreciated!

To give, you can:

- Place your offerings in the Offerings Box in the Sanctuary
- send your gifts through the mail
- bring your gifts by the church (place in big black mailbox outside)
- set up automatic payment through your bank
- or give online through our [PayPal](#) button at www.fpcwilloughby.org/Giving



2022 Offering Envelopes are delayed from the printers.

As soon as they are in, notification will be made.

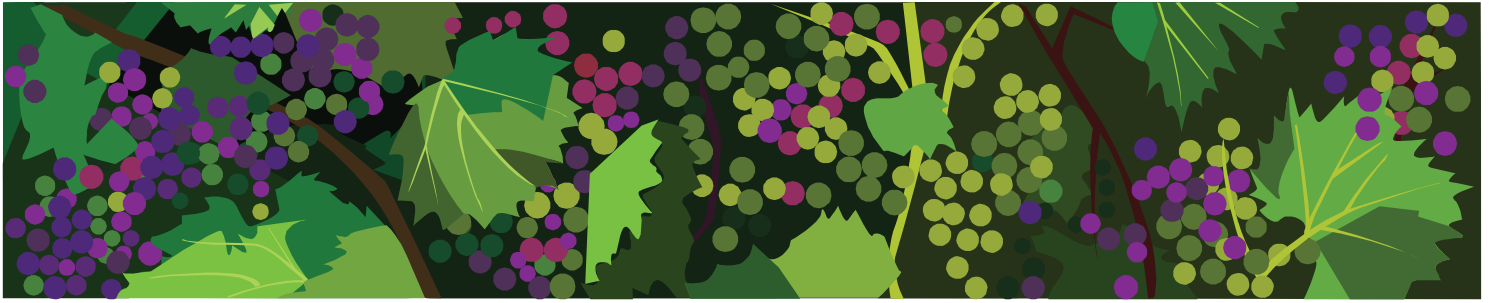
Boxes will be made available in the narthex and can be mailed
if you are not attending church in person.

Please contact Gail in the church office if you want offering envelopes.

office@fpcwilloughby.org

Thank you.

The 2022 Flower Chart is up in the East entryway of the church.
Please sign up to provide flowers for the Sanctuary on Sundays
honoring or memorializing a person or date that is significant to you.



2022 PER CAPITA

Understanding per capita

Per capita is a set amount of money — sometimes referred to as “apportionment” — per member that congregations pay to the larger Presbyterian Church (U.S.A.). Said another way, it is like a Presbyterian community fund — part of the glue that holds Presbyterians together. Because Presbyterians share in the benefit of the PC(USA)’s system of government, the expenses associated with performing the functions of that system are shared by everyone.

When Presbyterians participate in per capita, they’re saying, “I’m in. I’m a part of this denomination. We are connected to it. We intend to support it.”

The Per Capita amount First Presbyterian Church - Willoughby must pay in 2022 is \$5,934.80.

This is based on our congregational membership as of December 31, 2020.

The Per Capita amount for 2022 is **\$34.91** per member.

EACH member is asked to contribute the per capita amount in January to be distributed for operations in our congregation, presbytery, and the General Assembly. **“Rounding up” to \$35.00 may be easier math and would be welcome to help offset the cost for those who do not contribute.** 😊

Please contribute your Per Capita today!

Thank you all!

First Presbyterian Church - Willoughby

Christian Education

We are evaluating and continuing to adjust our programming as participation evolves. The following plans are in place, with changes announced when necessary:



Childcare for infants to age 4 is available from 8:45 am to Noon Sunday mornings in the toddler room.

- Pre-K (age 4) to Grade 5 meet in Room #4 from 10-10:45 am.
 "Grace and Gratitude" Bible stories.
- Grades 6 to 12 meet as Youth Group only during this time of transition. Deborah Nanney and Pastor Shane are currently leading activities for this group. An email and texting group of parents and teens is being utilized to communicate meeting times and events.
- Sunday Adult Ed meets at 7 pm by *Zoom*.
- Tuesday night Bible Study **resumes on January 18** at 7pm on *Zoom*. Topic: *Parables*



GED Classes - St. Noel Church in Willoughby Hills is offering free individual tutoring for adults wanting to get their GED certificate. The Adult Education Resource Center (AERC) is offering help with all four sections of the GED test.

Sessions are available on Monday and/or Thursday evenings from 6-8 pm at the church, 35200 Chardon Road, Willoughby Hills. **Call 440-946-0887 or email acamino@stnoel.org with any questions or to sign up.**

MISSION COMMITTEE FREE-FOOD DISTRIBUTION - Requested food donations for the month are: **Canned tuna or chicken, pasta and sauce, peanut butter & jelly, toilet tissue, canned veggies.** Items can be placed in the grocery cart at the church entrance on Wednesday and Thursday morning each week. Your kind donations enable us to feed the hungry in our community through our Free-Food Distribution at 4:00 pm each Monday.

The Mission Committee is also requesting homemade cookies for the *Agape Feast!* being held **Thursday, January 27**. Please RSVP to Mary Sanders 440-440-382-6332 if you can contribute, and bring your cookies or brownies to the church Wed/Thurs Jan 26/27. Thank you!

JANUARY LECTIONARY

Jan 2	Jeremiah 31:7-14	John 1:10-18	2 nd Sunday of Christmas
Jan 9	Isaiah 43:1-7	Luke 3:15-17, 21-22	Baptism of the Lord
Jan 16	1 Corinthians 12:1-11	John 2:1-11	2 nd Sunday after Epiphany
Jan 23	1 Corinthians 12:12-31	Luke 4:14-21	3 rd Sunday after Epiphany
Jan 30	1 Corinthians 13:1-13	Luke 4:20-30	4 th Sunday after Epiphany

**The Annual Meetings of the Congregation and the Corporation
will be held Sunday, January 30, 2022 at 10:00 am in the Sanctuary**

Agenda

- * To approve the Annual Report**
- * To elect Corporate Officers**
- * To accept the 2022 budget**
- * To approve a motion to reduce the number of elders from fifteen to twelve**
- *To approve the Terms of Call for the Rev. S. Shane Nanney**

Session Covid-19 Policy

- Masks are required for everyone inside the building. This includes singing (regardless of vaccination status)
- People who are speaking (during worship services) will not be required to wear a mask while speaking.
- Vaccinations and masks are required for childcare personnel.
- Vaccinations and masks are required for classes (persons teaching the classes will be vaccinated and wear a mask when in the church building).
- Unvaccinated persons shall maintain a 6-foot distance from other people, especially around children.
- The coffee hour will continue, but Bill Henrich and Rev. Nanney will decide on a week-to-week basis as to whether to continue further.
- Spray disinfectant in the Sanctuary between worship services will continue. This will also help with the flu and cold season and give members a sense of confidence that we are trying to eliminate surface transmissions of viruses.
- If and when we receive any mandate from governmental agencies or the Presbytery, we will comply.

*The **Sunday Coffee Hour** will **NOT be held** until further notice due to the increased numbers in the COVID-19 Pandemic. Thank you for your understanding.*

CHURCH OFFICE HOURS

Church Office Hours M-F 9-5

The Office Manager & Financial Secretary (Gail Schemm) and the Fellowship & CE Director (Lisa Hillegass) are in the office and are available too by phone or email.

Please call or email if you need them for anything!

Pastor Shane is in the office Mondays-Thursdays. He is always available by phone or email as well.

Please call or email if you need him for anything!

Pastor Shane: shanenanney@gmail.com & 440-813-4645 **Gail Schemm:** office@fpcwilloughby.org & 440-897-8109

Lisa Hillegass: tlkcp@ameritech.net & 440-384-0187